



[www.angelleadesigns.com](http://www.angelleadesigns.com)



PDF  
sewing  
pattern &  
tutorial

# Ruffle Tote

## SEWING PATTERN

© 2011 Anthea Christian

This pattern may not be sold, shared or distributed in any form. For more information about my terms and conditions please visit <https://angelleadesigns.com/policies>

[www.angelleadesigns.com](http://www.angelleadesigns.com)



# ❧ Ruffle Tote ❧

## SEWING PATTERN

Designed by Anthea Christian

Email: [anthea@angelleadesigns.com](mailto:anthea@angelleadesigns.com)

Website: [angelleadesigns.com](http://angelleadesigns.com)



Option A ~ Lace Trim



Option B ~ Fabric Trim

## Materials

- 35cm (14") fabric for outer bag
- 35cm (14") fabric for lining and pocket
- 45cm (18") fabric for handles, if cutting handles with straight grain running *lengthwise* (recommended) OR 20cm (8") fabric and a 5cm x 45cm (2" x 18") piece of interfacing, if cutting handles with straight grain running *crosswise* - see note at step 22
- 20cm (8") fabric for ruffle
- 35cm (14") iron on pellon
- For Option A - 70cm (28") of 1" wide lace
- Removable/disappearing marker or chalk
- Ruler
- Matching thread
- Sewing machine and general sewing supplies

**FINISHED SIZE:** 24cm x 29cm (9 1/2" x 11 1/2") plus handles (20cm/8" drop)

*Note: Please read all instructions before commencing the project. Fabric requirements are based on material that is 112cm (44") wide. Pre-washing and ironing of all fabric is recommended.*

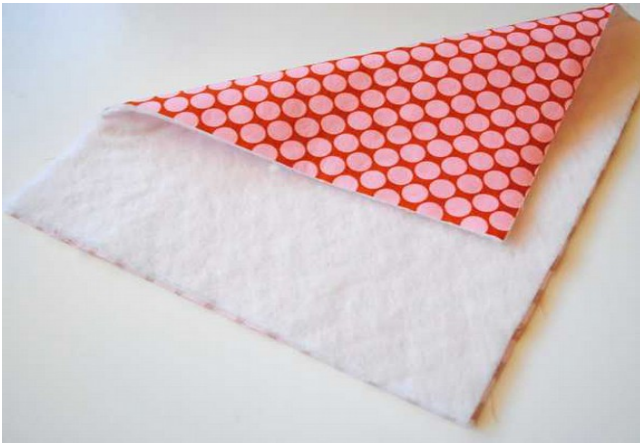
**Seam allowances are 1cm (3/8")** unless otherwise stated and are included in the cutting measurements.

## Directions

1. Cut the following:

- Two 28cm x 34cm (11" x 13 3/8") rectangles from the outer bag fabric
- Two 28cm x 34cm (11" x 13 3/8") rectangles from the lining fabric
- Two 28cm x 34cm (11" x 13 3/8") rectangles from the pellon
- Two 10cm x 45cm (4" x 17 3/4") rectangles from the handle fabric
- Two 28cm x 16cm (11" x 6 1/4") rectangles from the lining fabric for the pocket
- Two 55cm x 16cm (21 5/8" x 6 1/4") rectangles for the ruffles
- Option A: Two 34cm (13 3/8") lengths of lace
- Option B: Two 2.5cm x 34cm (1" x 13 3/8") strips from outer bag fabric.

2. Fuse the pellon to the wrong side of both outer bag rectangles.



3. Fold both ruffle strips in half lengthwise, right sides together, and stitch long edges together. Press the seam open.



**Note:** Steps 3-12 need to be repeated with the other ruffle strip as there is a ruffle on both the front and back of the bag.

4. Turn the strips out the right way and press with the seam-line running exactly down the centre.



5. Sew two rows of basting stitch (largest stitch on your machine) 1/8" either side of the centre seam-line - do not backstitch at the start or finish.

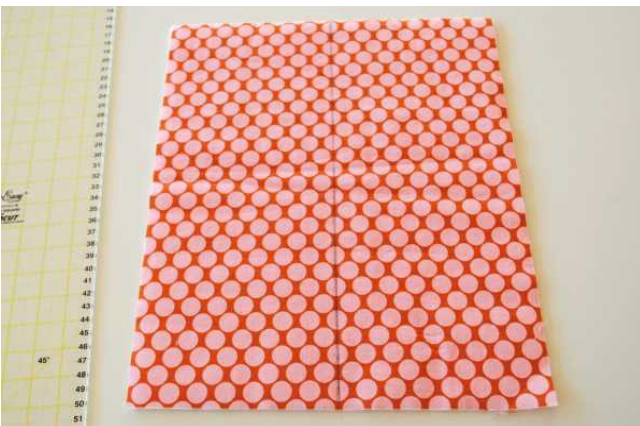




6. Pull on both threads at the same time (ie, either both top threads or both bottom threads) and gather the fabric up until it is the same length as the outer bag rectangle.



7. Measure the short side of the outer bag rectangle to find the centre, mark it, then draw a line from top to bottom. It doesn't matter what type of marker you use as the line will be hidden underneath the ruffle.



8. Using the line as a guide, pin the ruffle (with seam underneath) down the centre of the rectangle. Align the raw edges of the ruffle with the raw edges of the rectangle at top and bottom.



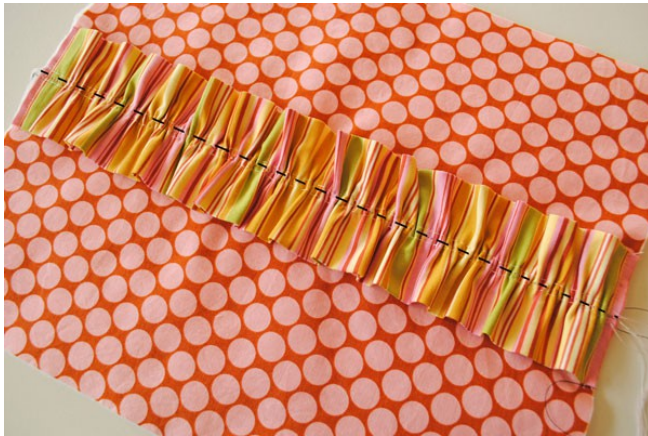
9. Stitch both ends of ruffle to rectangle within the seam allowance.



10. Sew the ruffle to the rectangle at the centre.



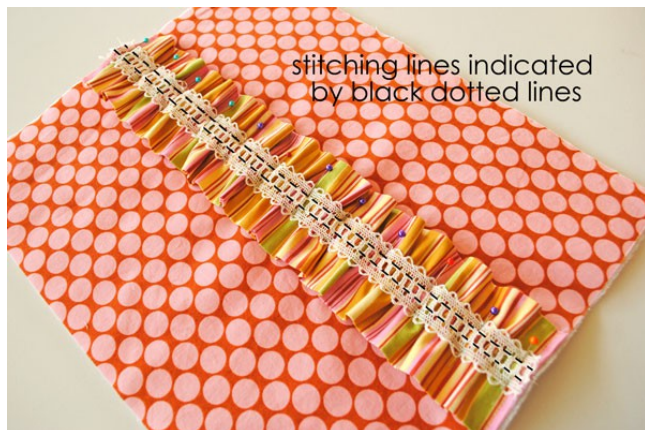




Step 10

For Option A (lace trim) proceed to step 11. For Option B (fabric trim) skip to step 12.

11. **OPTION A:** Pin lace to centre of ruffle, then sew it on using two rows of straight stitch  $\frac{1}{4}$ " apart. Then go to step 13.



stitching lines indicated  
by black dotted lines



12. **OPTION B:** Take both ruffle centre strips (the 2.5cm x 34cm strips you cut from the outer bag fabric), fold in long sides (to wrong side) until they meet in the centre, then press.



Pin folded strip (with raw edges underneath) to centre of ruffle, then stitch down both sides of the strip close to the edge.

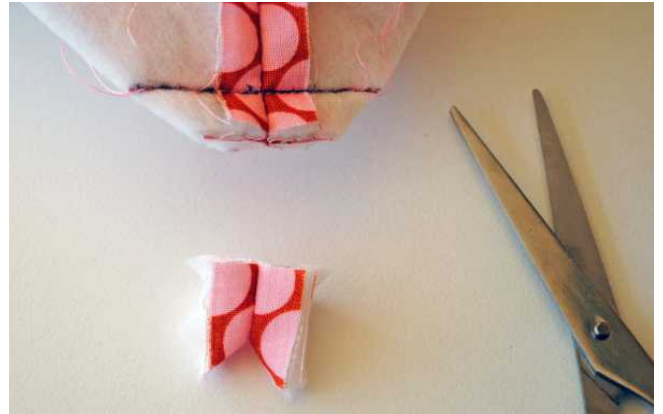


13. Pin both outer bag pieces together, with right sides facing and all edges aligned. Stitch together at sides and bottom. Press seams open.



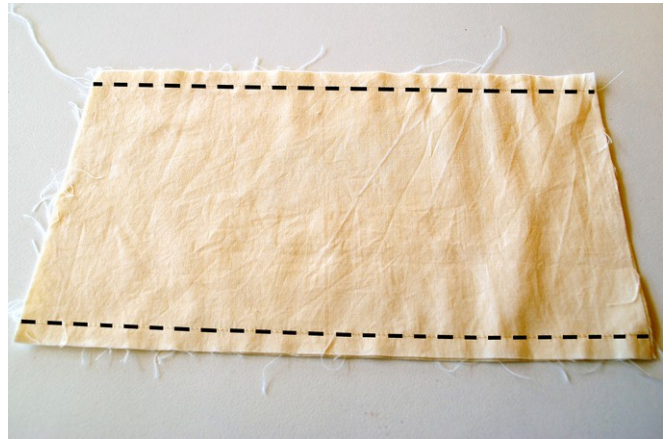


14. To form a gusset in the base of the bag, flatten the side seam so it aligns with the bottom seam and a triangle is formed. Pin through the seam-line to hold fabrics in place. Measure 3.5cm (1 3/8") from the corner (on both diagonal sides of the triangle), then draw a line from this point across the base of the triangle. The line should measure 5cm (2"), 2.5cm (1") each side of the seam-line. Stitch along the drawn line. Repeat with the other corner. Trim the excess fabric back to about 1cm (3/8") from the stitching.

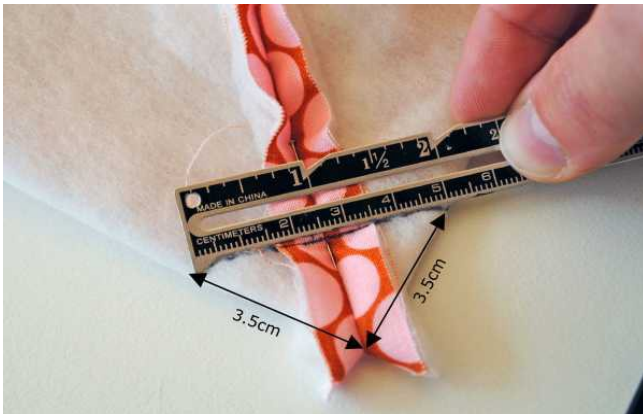


Step 14

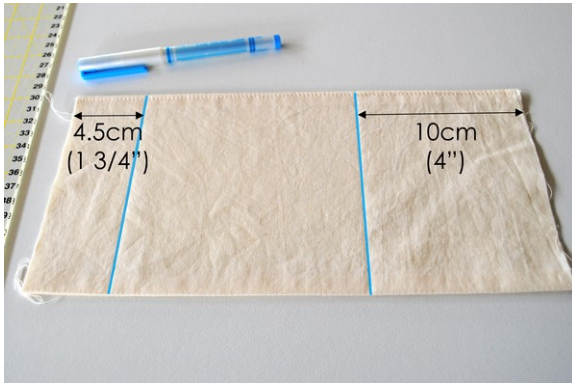
15. Place pocket pieces right sides together and stitch top and bottom edges (long edges). Turn out the right way and press.



16. Top-stitch one long side 1/8" from edge.



17. Measure 10cm (4") in from one side of the pocket (it doesn't matter which side) and draw a line (with a removable/disappearing marker or chalk) from top to bottom of pocket, then measure 4.5cm (1 3/4") from the other side of the pocket and draw another line.



18. Pin pocket (with top-stitched edge at the top) to one of the lining rectangles, positioning it 9cm (3.5") down from the top, and aligning raw edges of the pocket with side edges of lining.



19. Stitch pocket to the lining at side seams (within the seam allowance) and across the bottom (1/8" from edge). Also sew pocket to lining on both of the marked lines.



20. Pin lining pieces together, right sides facing, then stitch sides and part way across bottom. Leave a 10cm (4") gap in the bottom (marked by pins) for turning later. Press seams open.



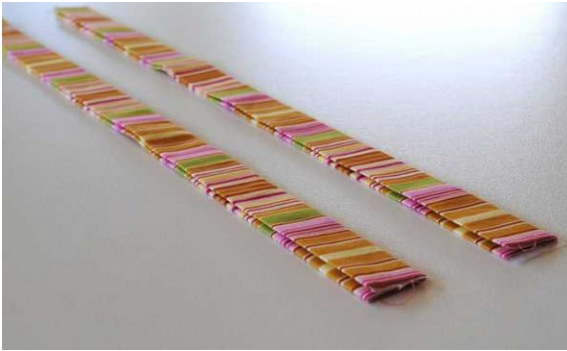
21. Form a gusset in the bottom corners as in step 14. Turn lining out the right way.



22. Take handle fabric strips, fold in half lengthwise (wrong sides together) and press to form a crease. Open out, then fold in each side to the centre crease, press, then fold in half again at centre crease. Press.

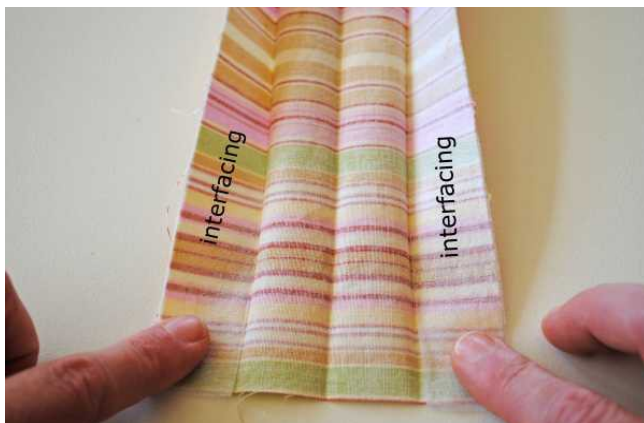






Step 22

**Note:** It is recommended to cut handle strips with the straight grain running the length of the strip, to ensure strong handles that don't stretch and distort, but, depending on the print on your fabric, this is not always possible. I wanted the stripe on my handles to run across the handle not down the length of it, so I cut the handles across the grain (the stretchy direction) of the fabric. To provide some stability, I fused a 2.5cm (1") wide strip of interfacing on both outside sections of the handle strip (indicated in the photo below).



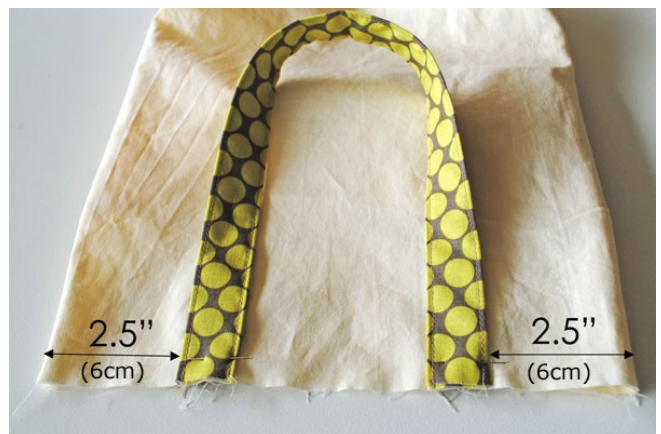
23. Stitch the open side of handles closed about 1/8" from the edge.



24. Also top-stitch other side of handles. (I forgot to do this until later, so I'm showing the handles of another bag).



25. Pin the handles to the right side of lining at top edge, about 6cm (2.5") from the side seams.



26. Stitch handles to lining within the seam allowance. Make sure you backstitch at start and finish to ensure handles are securely attached.





27. Place outer bag (right side out) inside lining (right side facing in), align side seams and top edges and pin together at top. Make sure the handles are tucked down inside the bag out of the way, then stitch the entire way around the top.



28. Turn bag out the right way through opening in lining.



29. Push the lining down inside the bag and position the seam-line slightly to the inside of the bag so the lining isn't visible from the outside of the bag. Top-stitch around the top edge of bag 1/8" from edge.

*Tip: use thread in the needle to match main fabric and thread in the bobbin to match lining.*



30. Hand-stitch opening in lining closed using a ladder-stitch.



There is a great ladder-stitch video tutorial on my website if you're not sure how to do the stitch:

<https://angelleadesigns.com/tutorials/ladder-stitch-demo-video>

Well done, you're finished!



## Terms of use

© 2011 Anthea Christian - Angel Lea Designs

This pattern may not be sold, shared, re-produced, transmitted or distributed in any form. Permission is granted to sell, in limited numbers, items made using this pattern on the following conditions:

- Items must be made by one person in their home;
- Any online listing descriptions must credit Angel Lea Designs as the pattern designer and include a link to my website: <http://angelleadesigns.com>.
- All items must be tagged or labelled with the wording "made from a [www.AngelLeaDesigns.com](http://www.AngelLeaDesigns.com) pattern".
- Mass-production of items is NOT acceptable.

I would love to see your bag! Feel free to share a photo of your creation on my Facebook page or Instagram:

**[www.facebook.com/angelleadesigns](http://www.facebook.com/angelleadesigns)**

**[www.instagram.com/angel\\_lea\\_designs](http://www.instagram.com/angel_lea_designs)**

Don't forget to use the Instagram hashtags #AngelLeaRuffleTote and #AngelLeaDesigns so I can find your photo(s).

## More patterns by Angel Lea Designs



To view these and **many more**, visit  
<https://angelleadesigns.com/shop/>